



S.570 Packaging Waste Reduction Needs Assessment Summary

MASSACHUSETTS IS FACING A WASTE CRISIS

- Nearly 50% of our trash is being hauled out of state for disposal, as far as Alabama, because we don't have capacity to manage it in-state.
- Municipal solid waste program costs across the state have risen over 50% in the past 5 years.
- Longer hauls to disposal sites results in more greenhouse gas emissions.
- In 2022, 1.1 million tons (27%) of trash consisted of packaging and printed paper.
- 2x as much recyclable material in our state was disposed of rather than recycled in 2022.
- The growing amount of non-recyclable packaging is making recycling confusing and less effective.

THE SOLUTION

MassDEP 2030 Solid Waste Master Plan (SWMP)
Needs Assessment (NA) bill, [S.570](#)

Goal:

Identify and recommend policies and infrastructure required to achieve the waste reduction goals of the SWMP through an Extended Producer Responsibility (EPR) program that covers packaging and printed paper.

2030 Waste Material
Reduction Targets:

31% reduction of packaging and
printed paper waste

35% reduction of food waste

S.570 accomplishes this goal through a statewide evaluation of:

The amount and types of packaging and printed paper currently managed through reuse, recycling, composting, landfilling and incineration.

Current costs and revenues, level of access, and infrastructure capacity for end-of-life management

A projection of future needs, associated costs, and recommendations for how to achieve waste reduction goals

For more information about S.570, contact:

Claire Galkowski
MA Product Stewardship Council
Executive Director, South Shore Recycling Cooperative
director@ssrcoop.info, 781-329-8318

For more
information about
MassPSC, visit:
massrecycle.org



S.570 Packaging Waste Reduction Needs Assessment Summary

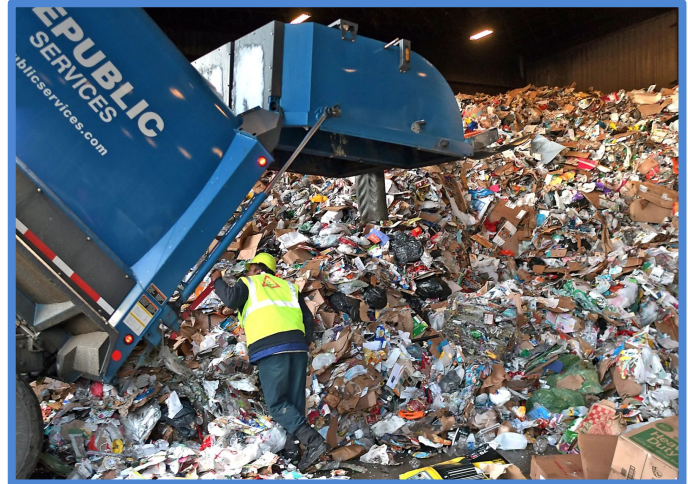
Prepared by the Massachusetts Product Stewardship Council

TIMELINE

The anticipated timeline from enactment to submission of the report and recommendations to the Joint Committee on the Environment and Natural Resources is 19 months.

PROCEDURE

- MassDEP appoints a multi-stakeholder Committee to:
 - Inform the needs assessment (NA) Scope of Work for MassDEP's solicitation for a consultant.
 - Provide data for and comments on the NA.
 - Review NAs and EPR programs in other states, including ME, CA, CO, MN, OR, IL, and MD.
 - Provide final recommendations to the General Court and the Governor.



- MassDEP issues a Request for Proposals and hires a consultant to perform the NA.

The Needs Assessment includes estimates of:

- Current quantities of covered materials consumed, a review of their collection and management systems, and the costs associated with their management.
- Disposal, recycling, reuse, and composting capacity in the state and region.
- Current reuse, recycling, and recovery rates.
- Impacts of non-recyclable/reusable/compostable covered materials on management and costs.
- Costs and investments needed to achieve recycling access for all residents, schools, entertainment venues, small commercial locations, public spaces to achieve the SWMP's goals.
- Litter flow and abatement conditions and needs.
- Current life cycle GGEs associated with the covered materials and the GGE reduction potential with an increasing level of reduction, reuse, and recycling.
- Waste reduction goals that are both realistic and ambitious under an EPR system.

The NA will also cover:

- Current and future environmental justice and equity of access, facility siting, workplace conditions.
- Feasibility, efficacy and cost of reuse systems.
- Prevalence of toxics in covered materials.

ESTIMATED COST

The anticipated cost of the NA is \$1.2 million based on costs in other states that have conducted or are conducting needs assessments.