



ssrcoop.info



# Do chemicals concern you?



Bring them to  
**SOUTH SHORE  
RECYCLING COOPERATIVE**



## HOUSEHOLD HAZARDOUS WASTE COLLECTION

**FALL 2025 9 am - 1 pm**

**9/6 Abington/ E. Bridgewater/ Hanson/ Whitman** also taking propane tanks, fire ext (fee); tires @ no charge

**9/13 Hanover/Rockland**

**9/20 Marshfield**

**9/27 Braintree** (ends at noon) \$5 per 5 gal. or 5 lb. cash copayment

**10/25 Plymouth** tires @ no charge


**11/15 Hull** propane tanks, fire ext (fee)

**NO  
LATEX/  
ACRYLIC  
PAINT  
(see over)**

**Locations are revealed  
on the Registration Form,**  
required for **ALL** attendees.

To register,  
scan this QR  
code, go to  
[bit.ly/  
Fall25HHW](https://bit.ly/Fall25HHW),  
or call  
781.243.1132



- ☠ Only residents/businesses from **SSRC Member Towns** may attend. 
- ☠ **Registration**, proof of residency are required.
- ☠ Subsidized **quantity limits**: 50 gal (liquids, based on container sizes) or 100 lbs (solids). Fees apply for larger quantities.
- ☠ Commercial generators must **register and pay**. (check to SSRC, Venmo, Paypal). Cost is up to \$59 per 25 gallons if liquid (based on container size) or 50 lbs. if solid.

**ABINGTON  
BRAINTREE  
COHASSET  
DUXBURY  
E.BRIDGEWATER  
HANOVER\*  
HANSON  
HINGHAM  
HULL  
KINGSTON  
MARSHFIELD  
NORWELL**

**PEMBROKE  
PLYMOUTH  
ROCKLAND  
SCITUATE  
WEYMOUTH  
WHITMAN**  
\* Visitor  
Authorization  
Form from  
Town required  
for out-of-town  
events

### HELP KEEP THE LINE MOVING:

- ✓ Bring items in labeled, closed containers†.
- ✓ Put items in boxes. **Don't bag** materials.
- ✓ Place in **trunk / rear** of vehicle.
- ✓ Have **proof of residency, authorization** or a **check to SSRC** if needed ready

### Accepted at all events:

#### From the workbench:

adhesives  
fiberglass resins  
oil based paint and stains \*  
photography chemicals  
solvent-based hobby/artist supplies  
solvents

#### From the garage:

flammable liquids and aerosols  
gasoline, gas / oil mixtures†  
marine, auto and spray paints  
other automotive fluids\*  
tire and carburetor cleaners, degreasers

#### From the shed:

cesspool cleaners  
fertilizers containing pesticides  
pesticides, herbicides, fungicides  
pool chemicals  
wood preservatives

#### From the house:

acids and bases  
drain cleaners  
hazardous cleaners and polishes  
elemental mercury  
mercury-containing products \*  
moth balls and crystals  
poisons  
rechargeable batteries\*

### Accepted at some events:

motor oil*	propane tanks*
antifreeze*	flares
fluorescent tubes*	asbestos

**Asbestos and elemental mercury** need special packaging. **CALL AHEAD 781.329.8318**

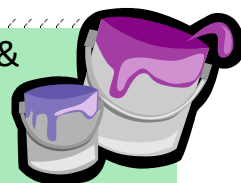
### Materials not accepted include:

LATEX/ACRYLIC PAINT  
prescription medications, sharps \*  
auto/truck/boat lead acid batteries \*  
industrial waste  
radioactive materials (*smoke detectors may be disposed in trash*)  
pathological and medical waste  
explosives (*contact your fire department*)

† Bring gasoline in red or yellow **DOT-approved gas cans**. Max 5 gal. containers for all other liquids. Drums require prior approval from Clean Harbors 781.380.7120

\* These materials are collected regularly by many retailers and/or towns

**\*\* Latex and acrylic paint** (soap & water cleanup) **is messy, but not hazardous. We can't accept it at these events.**



**If your paint is still usable**, Recolor Paints will accept it at their facility for a small fee. Go to [www.RecolorPaints.com](http://www.RecolorPaints.com) or call **833.732.6567** for details.

**If your paint's not usable**: remove lid. Absorb liquid with cat litter or paint hardener, and dispose with trash.

For more info, go to [ssrcoop.info](http://ssrcoop.info), click on

Hazardous Waste Collection ▾

or call the South Shore Recycling Cooperative at **781.243.1132**